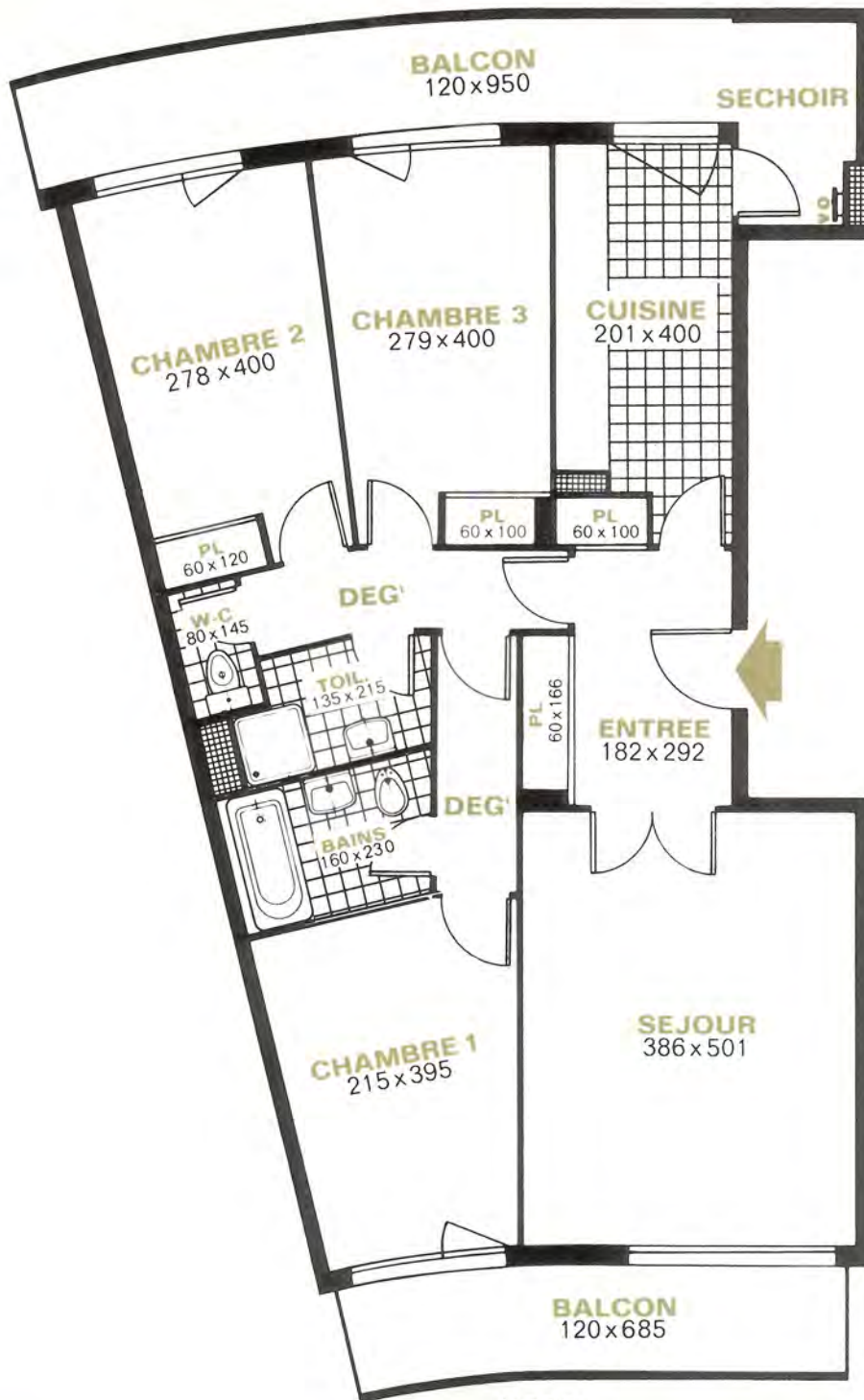


JARDIN

*2<sup>e</sup> étage  
197.350  
Parking  
110000*



# RESIDENCE DU PRINTEMPS



PIECES

IMMEUBLE B - ESC. 4

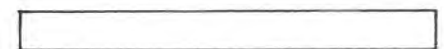
étage courant

SEJOUR	19,35
CHAMBRE 1	10,60
CHAMBRE 2	10,40
CHAMBRE 3	10,60
CUISINE	8,43
SANITAIRES	7,76
ENTREE-DEG'	11,16
PLACARDS	2,95

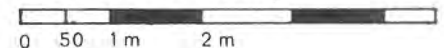
**SURFACE HABITABLE :** 81,25

BALCONS 21,16

**SURFACE TOTALE :** m<sup>2</sup> 102,41



échelle : 1 m = 12 m/m



Ce document n'est pas contractuel

JARDIN